

The background of the slide is a photograph of a mountain range with snow-capped peaks under a clear blue sky. In the foreground, three reindeer with large, dark antlers are standing on a grassy, brownish field. The text is overlaid on this image.

# **Arctic Boreal Vulnerability Experiment (ABOVE)**

## **2024 ABOVE L-band SAR Airborne Flights**

**15 August 2024 (DOY 228)**  
**Great Slave Lake Region**

**Charles Miller, Deputy Science Lead**  
**Jet Propulsion Laboratory, California Institute of Technology**  
**Peter Griffith, Elizabeth Hoy**  
**Carbon Cycle & Ecosystems Office**  
**and the ABOVE Science Team**

**For Ryan Pavlick, Kathy Hibbard, Laura Lorenzoni, Bruce Tagg, Jack Kaye**  
**NASA HQ**  
**2024**



# 15 August 2024/DOY 228

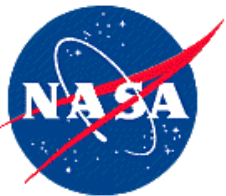
## Great Slave Lake Region



### Daily Summary:

- **C-20A (N802NA) L-band SAR ABoVE CAMPAIGN (CANADA / ALASKA)**
- REPORT DATE: 15 August 2024
- Current Status of Aircraft: **GREEN**
- Current Status of SAR: **GREEN**
- Current Status of PPA: **GREEN**
- Current Deployment Location: Yellowknife NT (CYZF)
- Crew: Nelson, Phelps, Reid, Devalon, Miller, Austerberry, Peacock
- NWT VIPs: Tanisha, Sean, Hannah
- Science Coordinator: N Pinto
- Science Lead: C Miller
- Project Manager: Y Lou





# 15 August 2024/DOY 228

## Great Slave Lake Region



### Daily Summary:

- Yellowknife (CYZF) - Yellowknife (CYZF)
- Collected 7 of 7 data lines
- Flight Plan – Flown: [PLAN 24055](#)
- Significant fire smoke throughout the flight.
- Precip < 5 mm in region. Light/intermittent rain showers
- **3 NWT VIP Visitors**
- **Post-flight Open House**



# 15 August 2024/DOY 228 Great Slave Lake Region







# 15 August 2024/DOY 228 Great Slave Lake Region







# 15 August 2024/DOY 228

## Interviews with Cabin Radio & CBC North



<https://cabinradio.ca/196953/news/yellowknife/why-theres-a-nasa-jet-parked-on-yellowknife-airports-tarmac/>







# 15 August 2024/DOY 228

## Open House – 200 Yellowknifers Visit N802NA

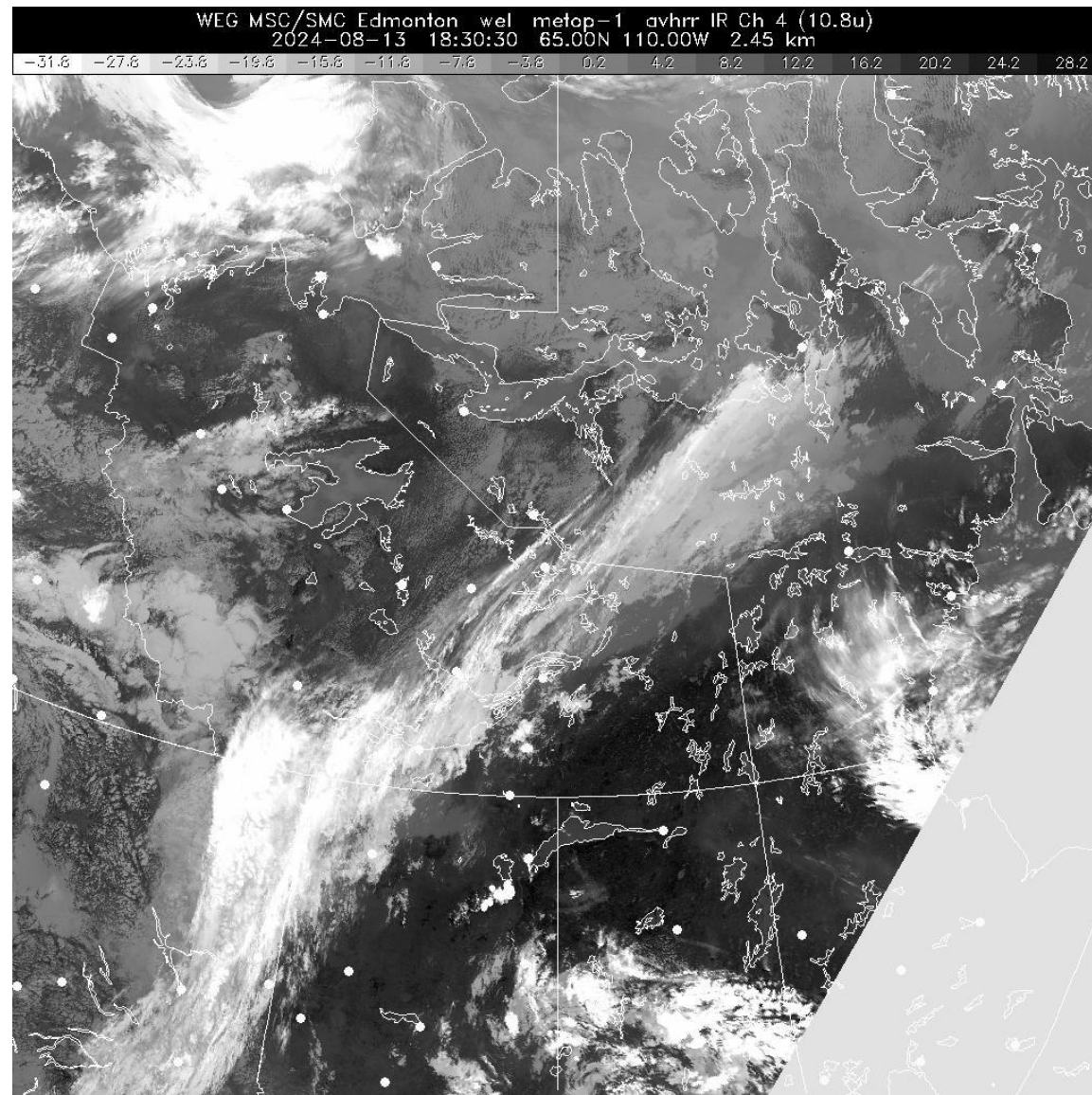
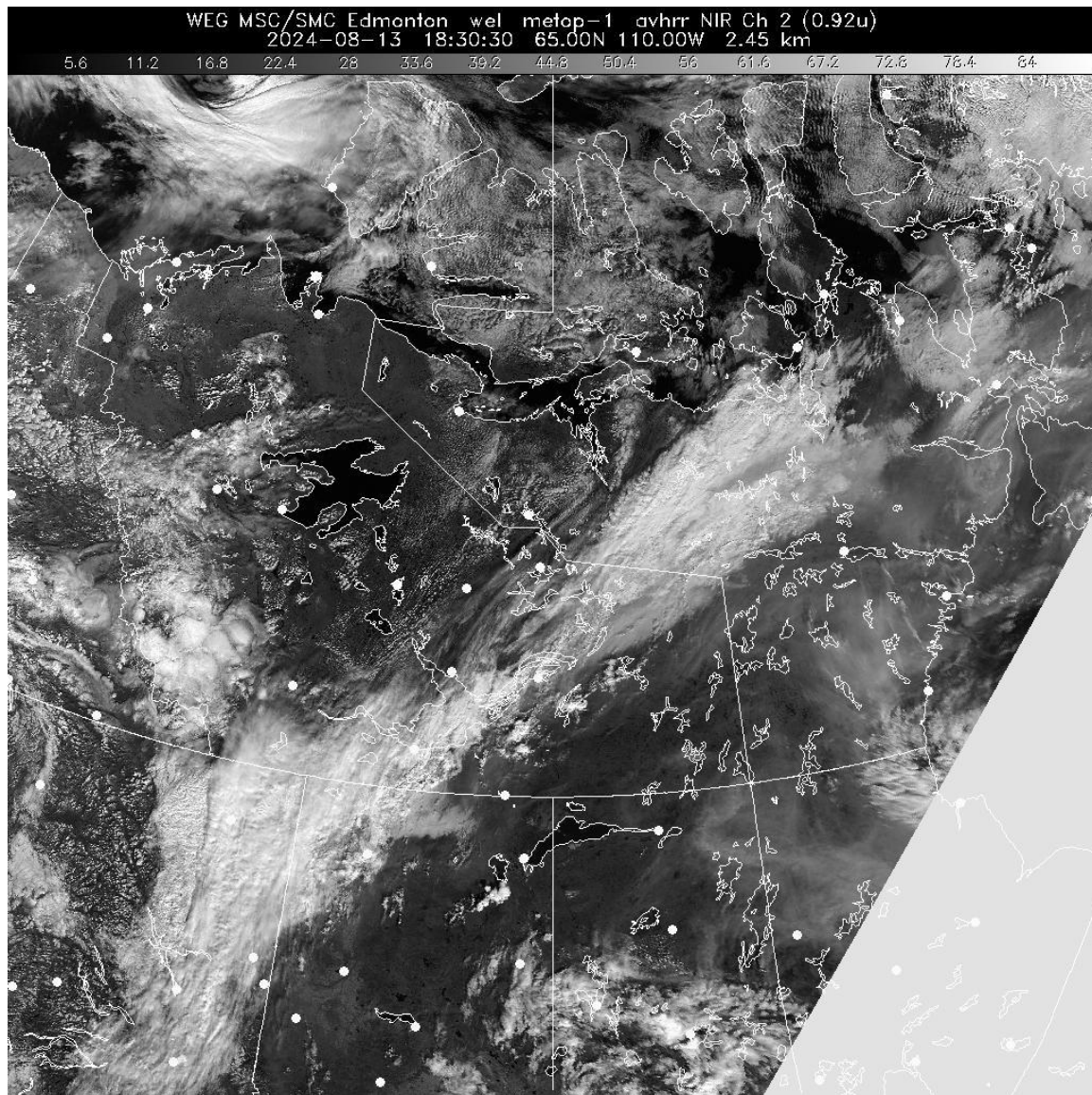






# 15 August 2024/DOY 228

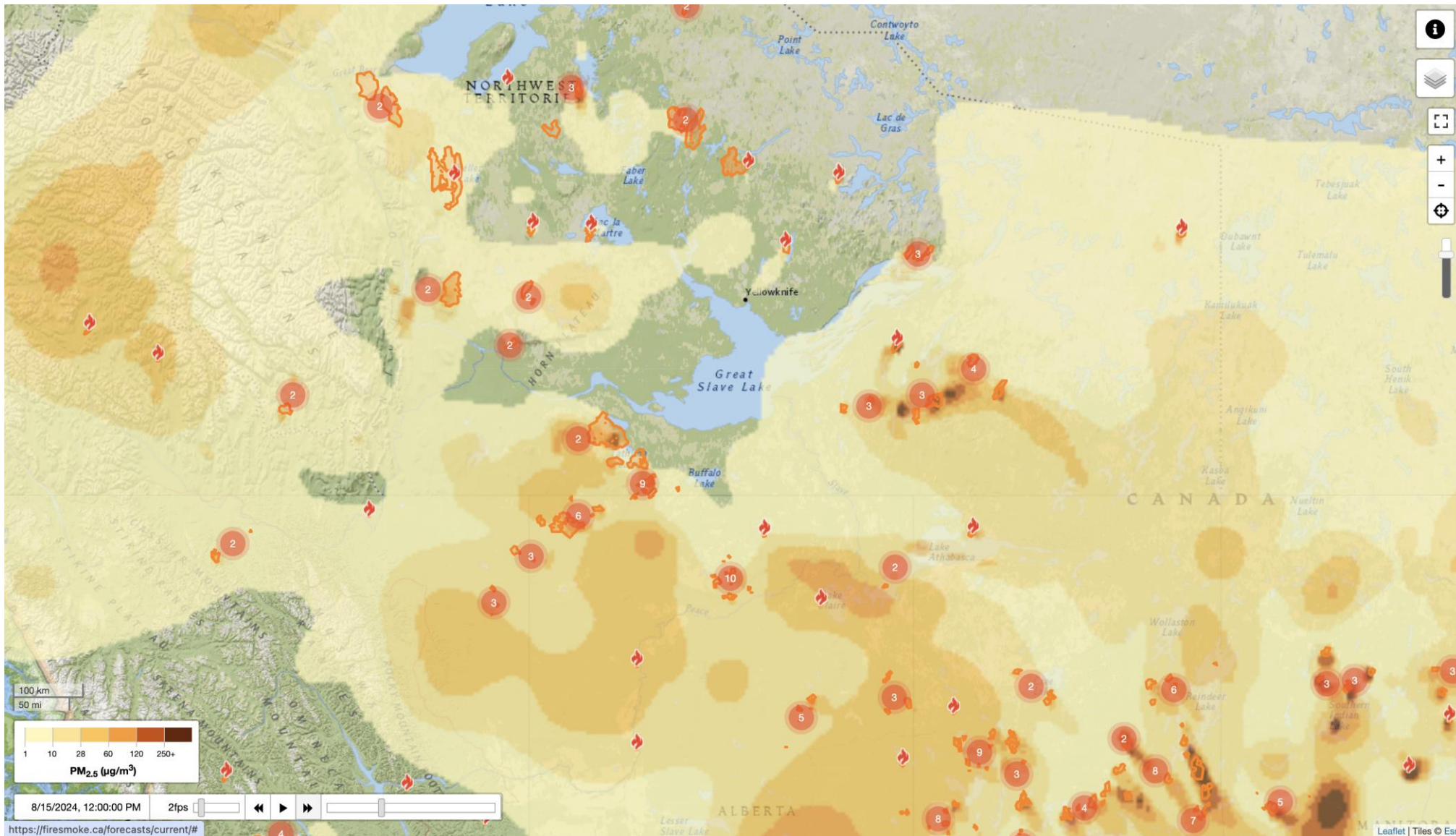
## Great Slave Lake Region



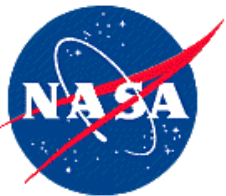




# 15 August 2024/DOY 228 Great Slave Lake Region







# 15 August 2024/DOY 228 Great Slave Lake Region



Flight Plan Report: peacock\_0690

[https://uavsar.jpl.nasa.gov/cgi-bin/report.pl?planID=PLAN\\_24055#summary](https://uavsar.jpl.nasa.gov/cgi-bin/report.pl?planID=PLAN_24055#summary)

## Data Acquisitions:

Line 1: scotty\_16713

Line 2: kakisA\_11703

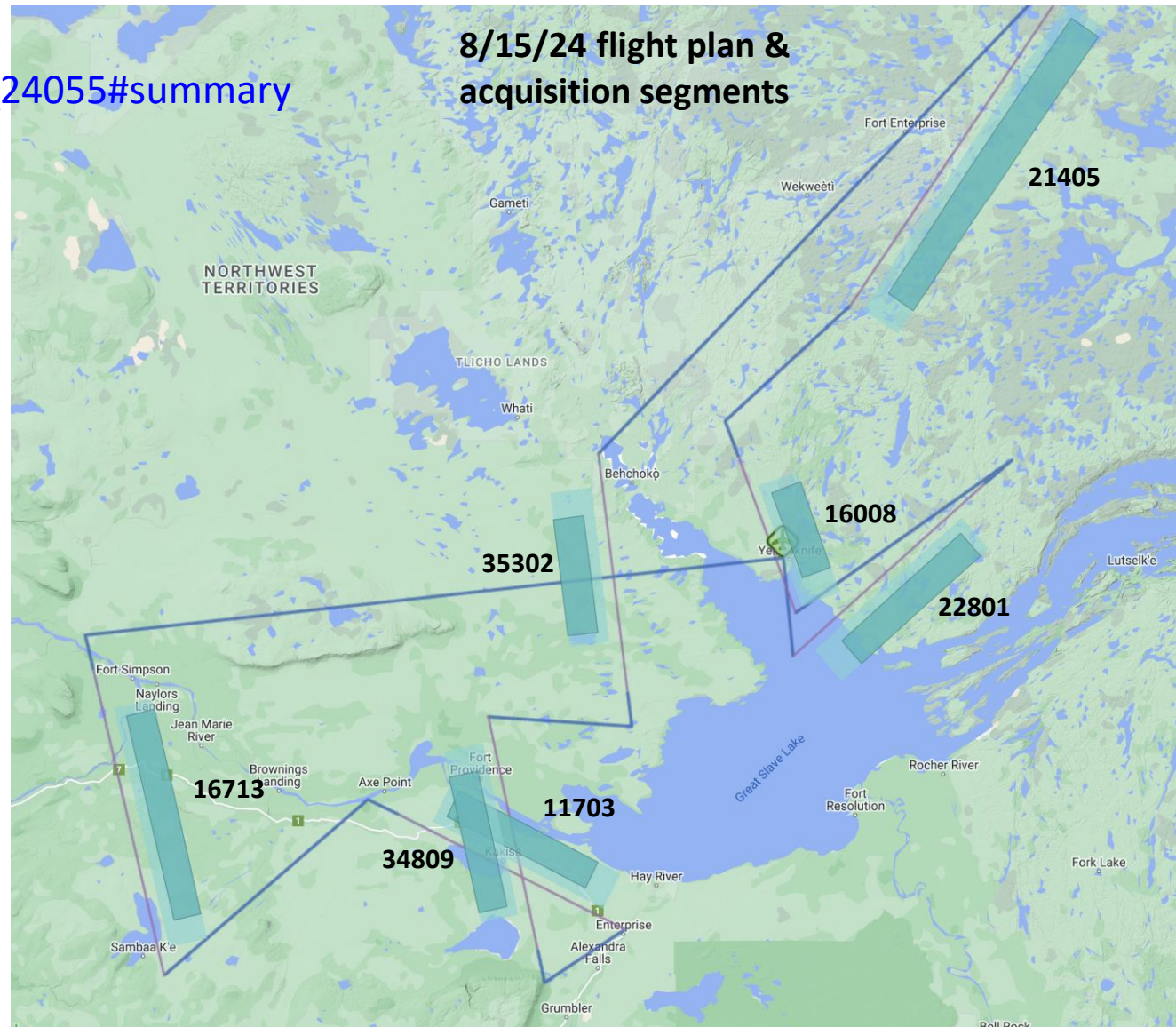
Line 3: kakisB\_34809

Line 4: behcho\_35302

Line 5: daring\_21405

Line 6: bakerc\_16008

Line 7: yellow\_22801







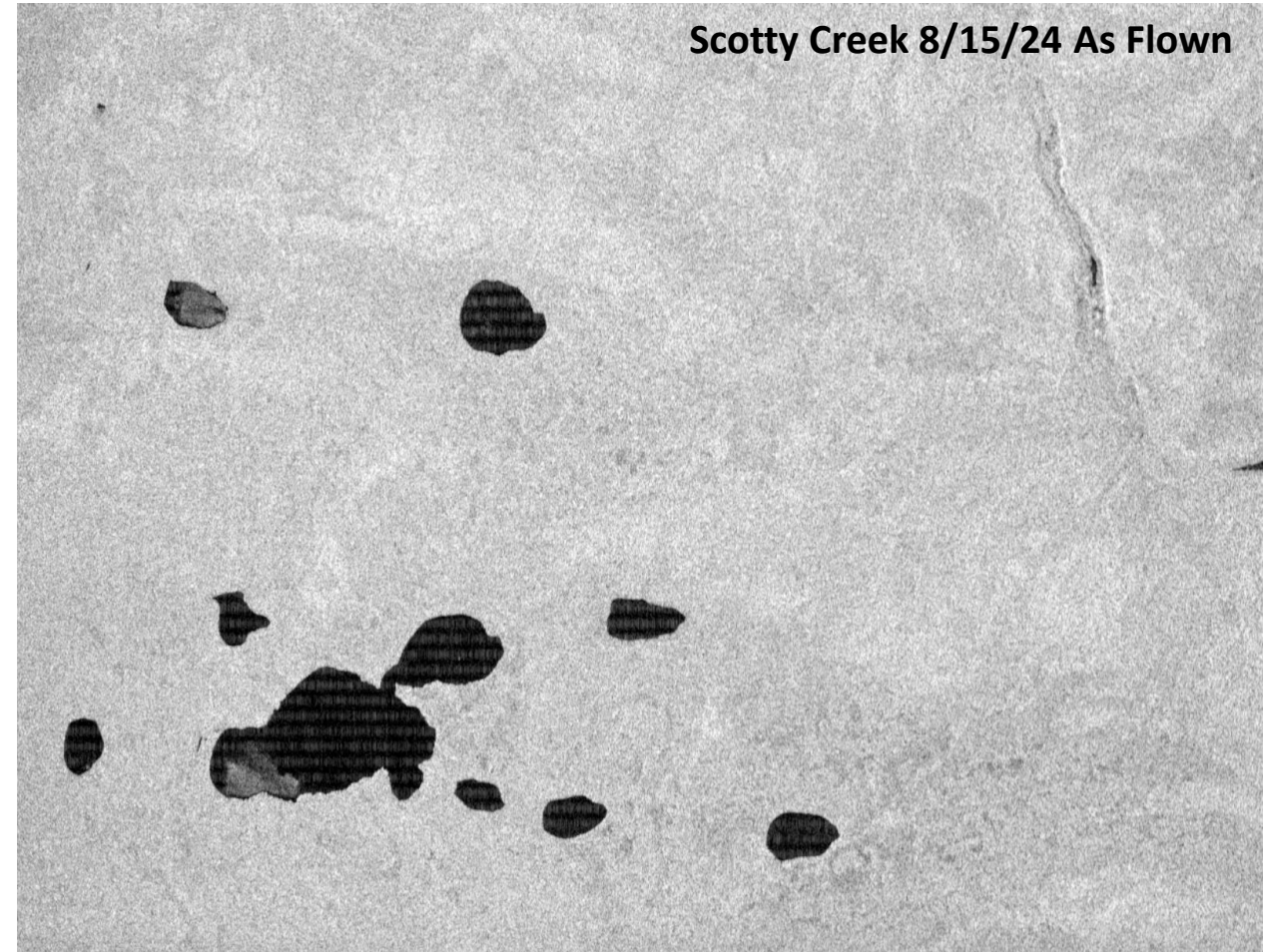
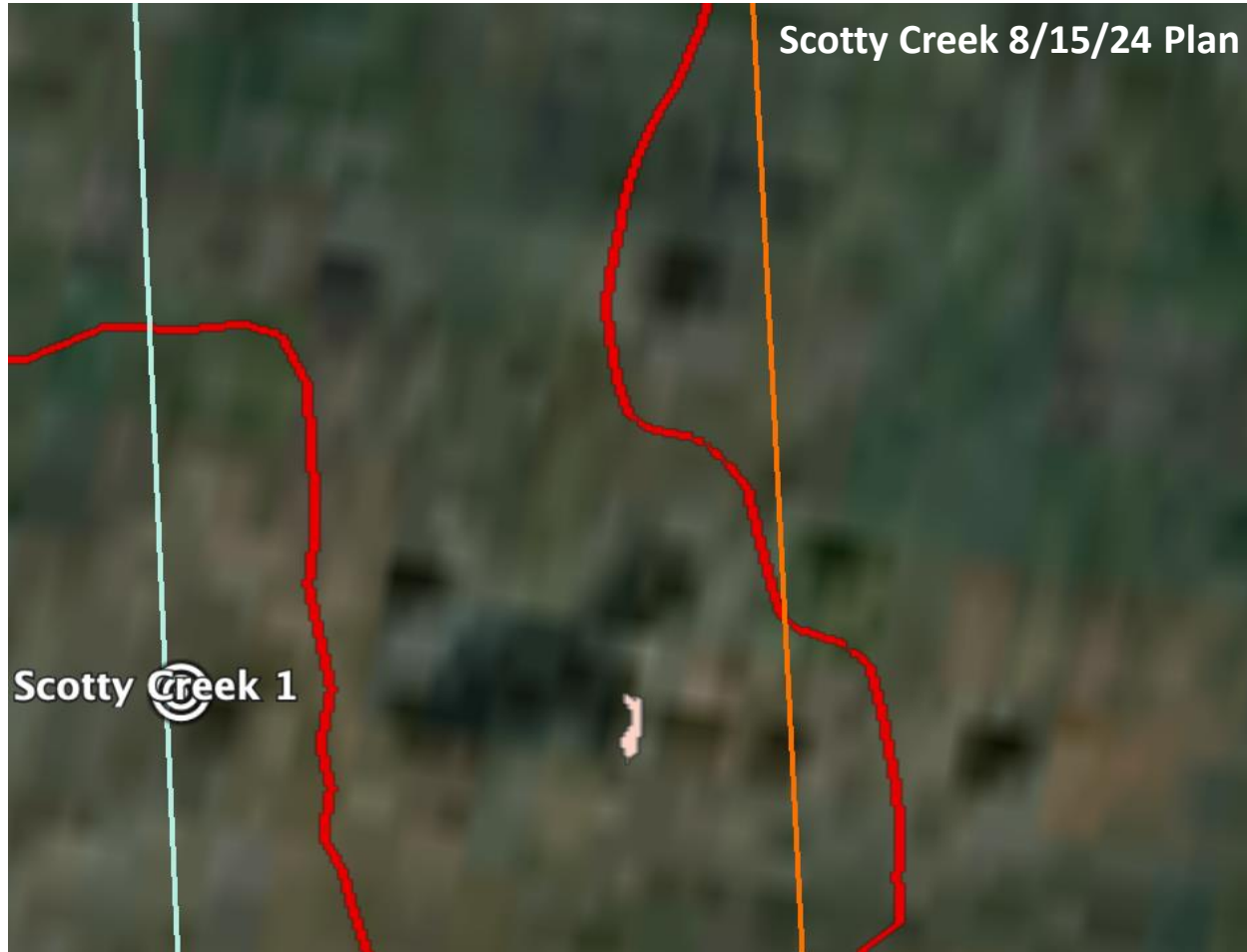
# 15 August 2024/DOY 228 Great Slave Lake Region



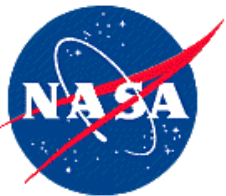




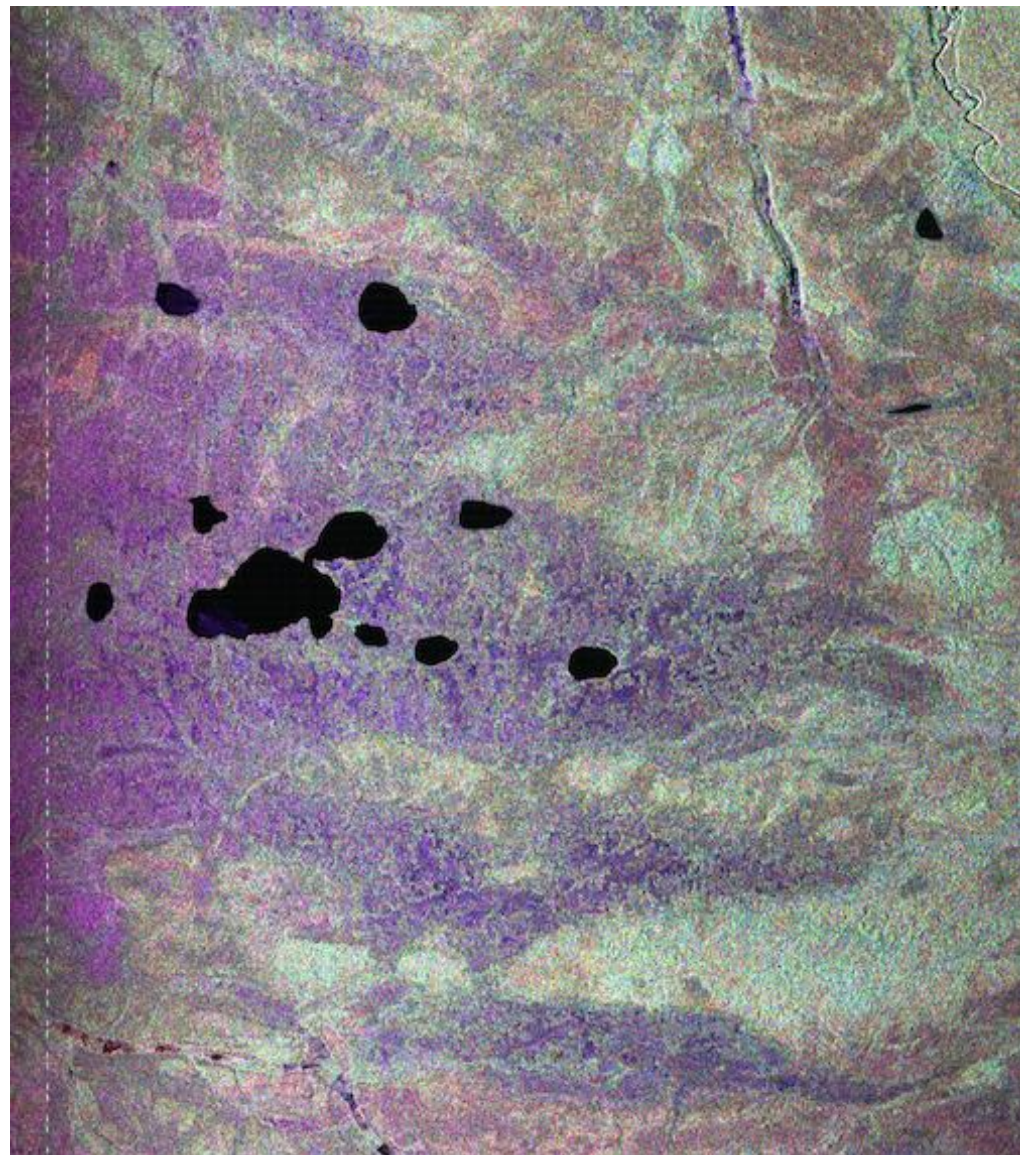
# 15 August 2024/DOY 228 Great Slave Lake Region







# 15 August 2024/DOY 228 Great Slave Lake Region







# 15 August 2024/DOY 228 Great Slave Lake Region

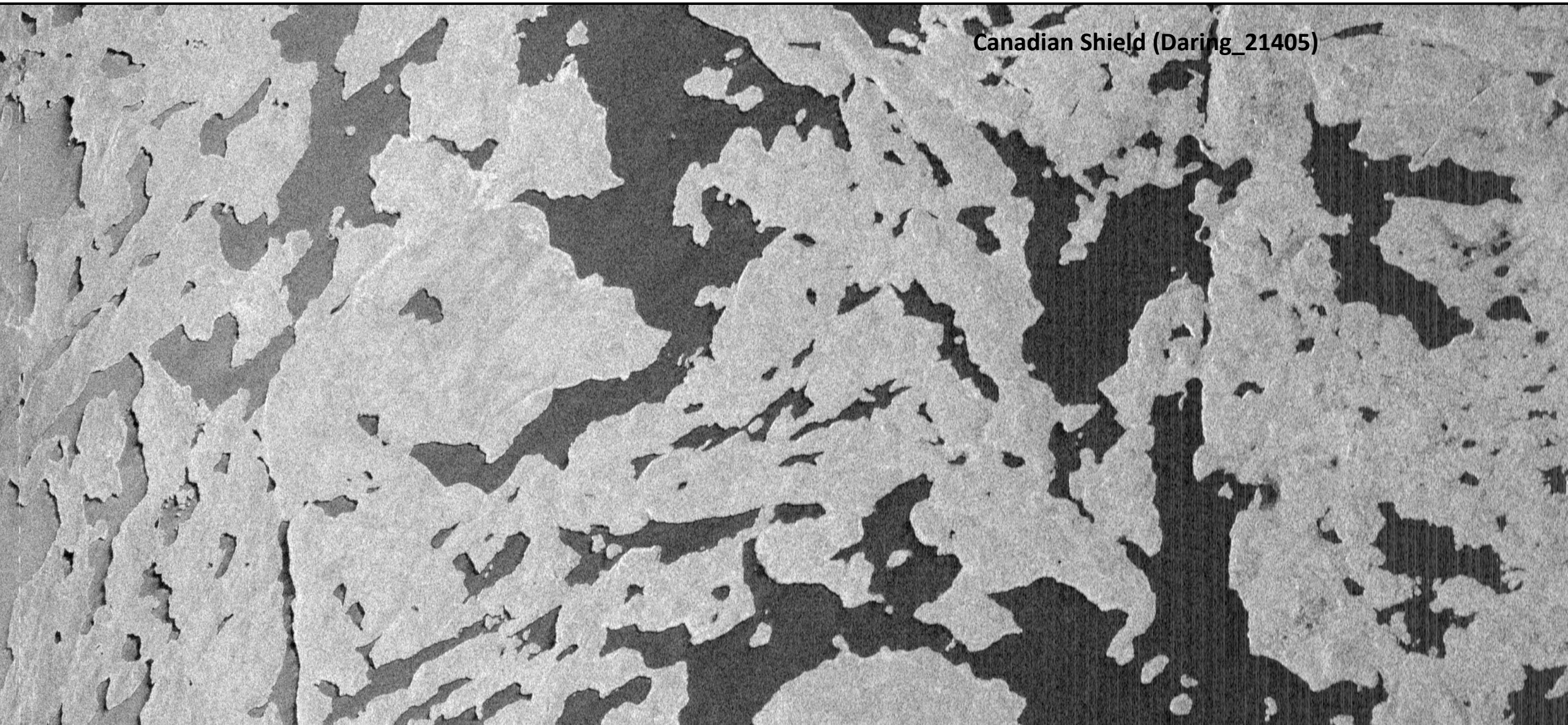


Fort Providence 8/15/24 As Flown





15 August 2024/DOY 228  
Great Slave Lake Region



Canadian Shield (Daring\_21405)





# 15 August 2024/DOY 228 Great Slave Lake Region

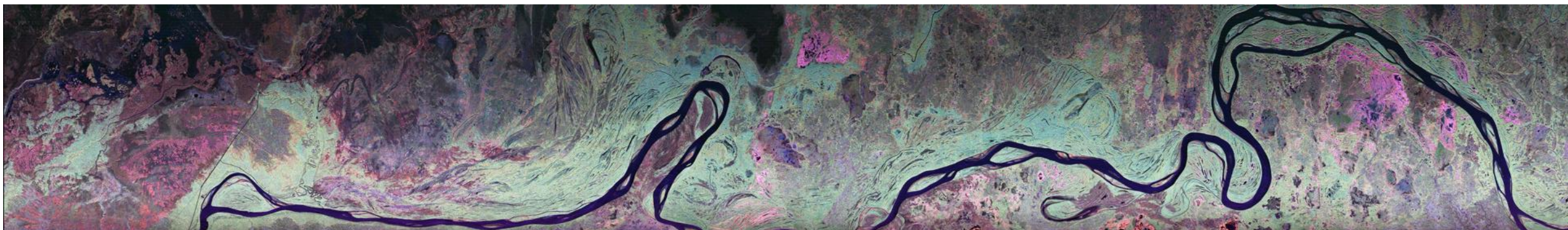
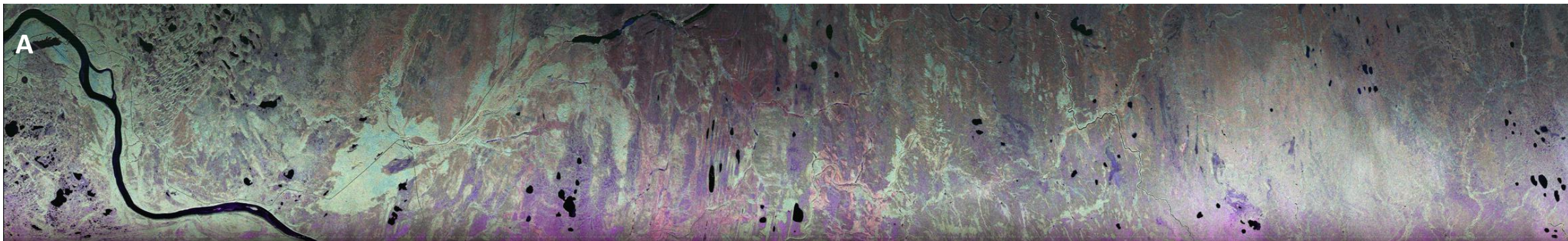


UAVSAR Quick-look products

A. Line 1: **scotty\_16713**

B. Line 2: **kakisA\_11703**

*Annemarie Peacock, JPL*







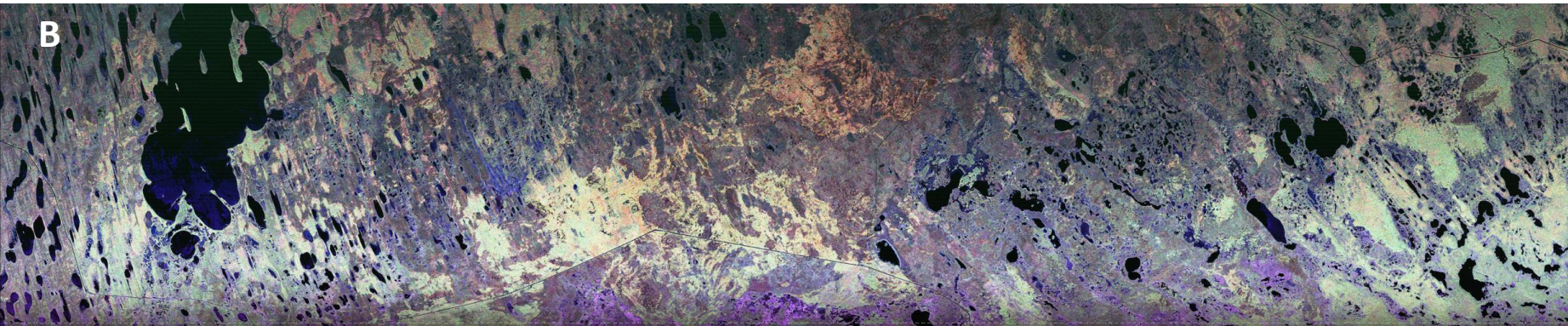
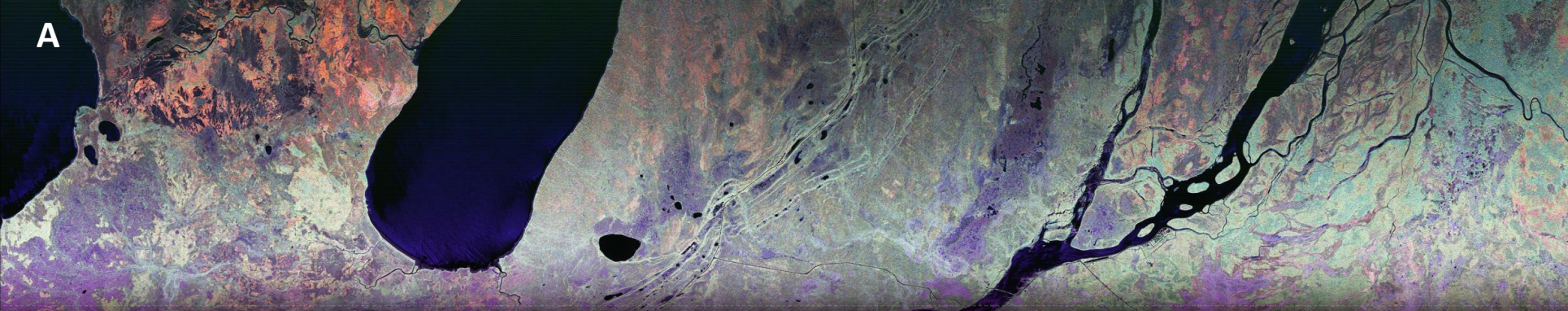
# 15 August 2024/DOY 228 Great Slave Lake Region



*Annemarie Peacock, JPL*

UAVSAR Quick-look products

- A. Line 3: **kakisB\_34809**
- B. Line 4: **behcho\_35302**







# 15 August 2024/DOY 228 Great Slave Lake Region



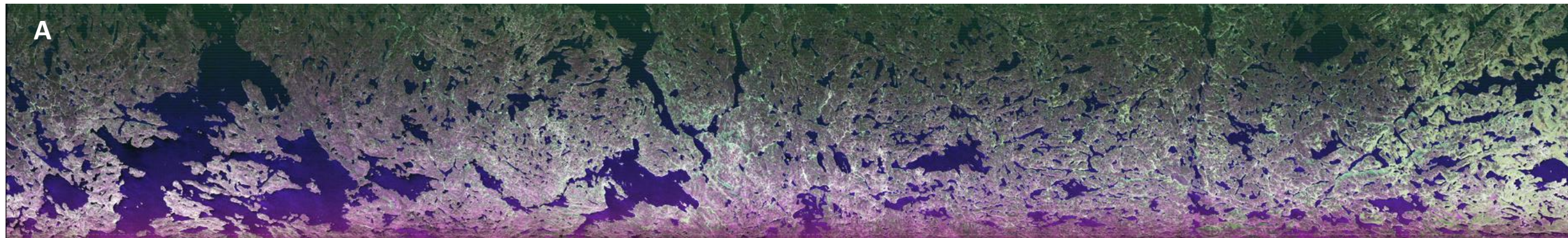
UAVSAR Quick-look products

A. Line 5: **daring\_21405**

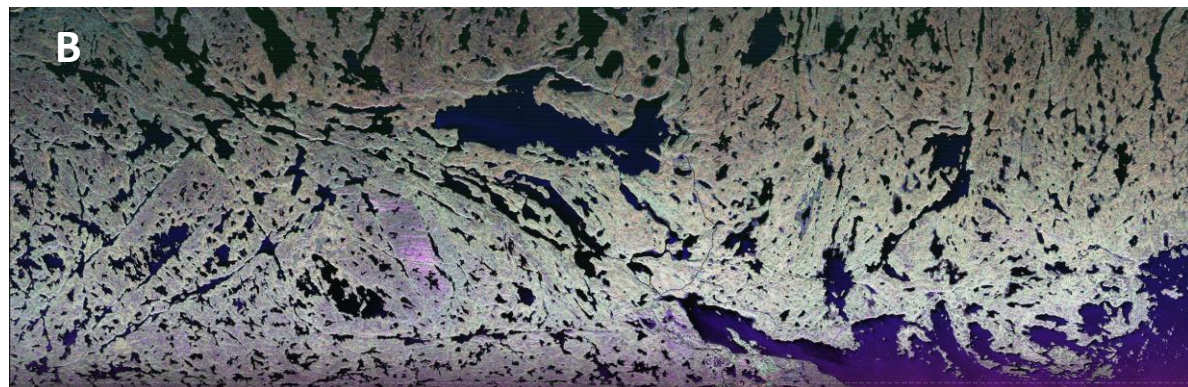
B. Line 6: **bakerc\_16008**

*Annemarie Peacock, JPL*

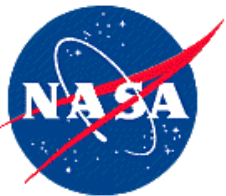
A



B





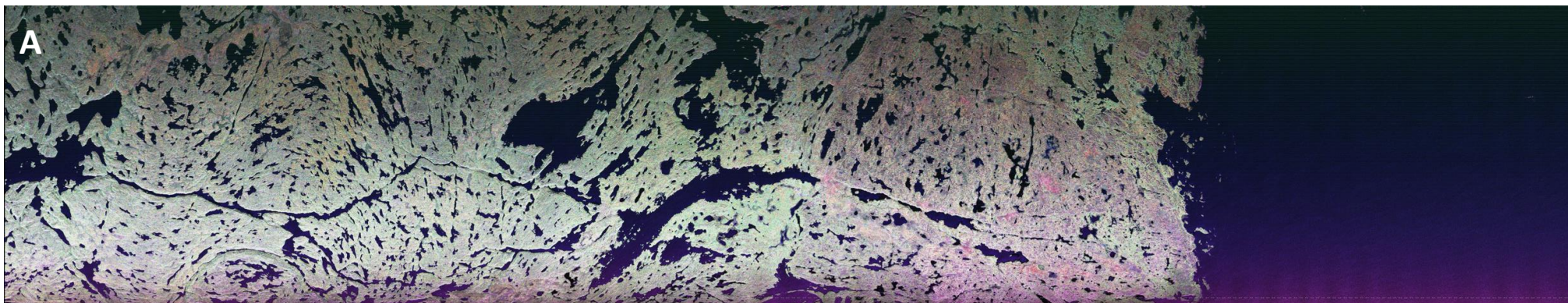


# 15 August 2024/DOY 228 Great Slave Lake Region



UAVSAR Quick-look products  
A. Line 7: yellow\_22801

*Annemarie Peacock, JPL*







15 August 2024/DOY 228  
Great Slave Lake Region



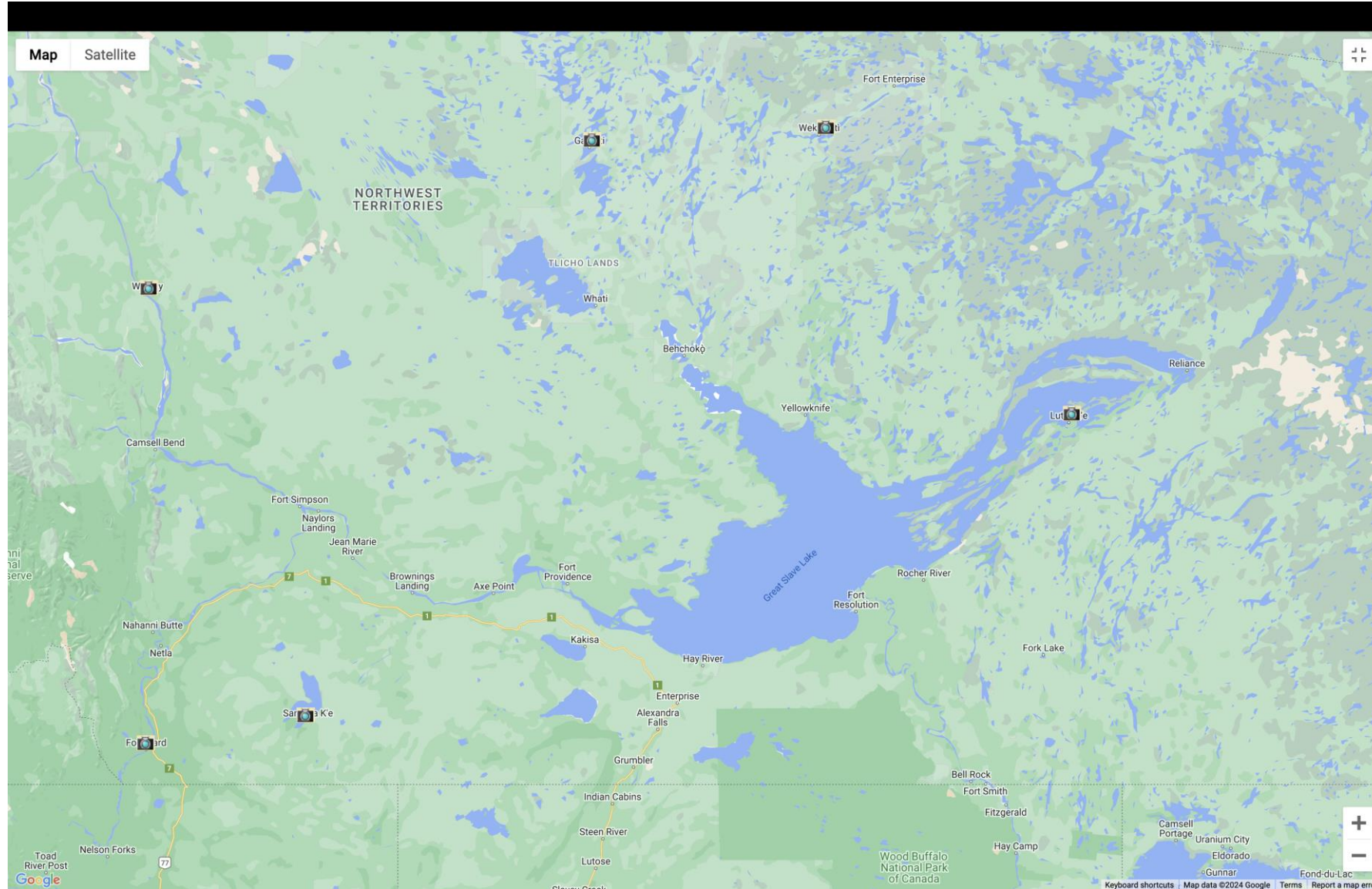
**BACKUP**





# 15 August 2024/DOY 228

## Great Slave Lake Region Web Cams







# 15 August 2024/DOY 228 Great Slave Lake Region



## Lutseke' Web Cams



SACN61 CYPY 131800 Photo taken at / prise a 2024-08-13 18:50Z  
METAR CYPY 131800Z AUTO 18004KT 150V230 9SM CLR 25/14 A2971 RMK SLP066 DENSITY ALT 2400FT



SACN61 CYPY 131800 Photo taken at / prise a 2024-08-13 18:50Z  
METAR CYPY 131800Z AUTO 18004KT 150V230 9SM CLR 25/14 A2971 RMK SLP066 DENSITY ALT 2400FT



SACN61 CYPY 131800 Photo taken at / prise a 2024-08-13 18:50Z  
METAR CYPY 131800Z AUTO 18004KT 150V230 9SM CLR 25/14 A2971 RMK SLP066 DENSITY ALT 2400FT



SACN61 CYPY 131800 Photo taken at / prise a 2024-08-13 18:50Z  
METAR CYPY 131800Z AUTO 18004KT 150V230 9SM CLR 25/14 A2971 RMK SLP066 DENSITY ALT 2400FT



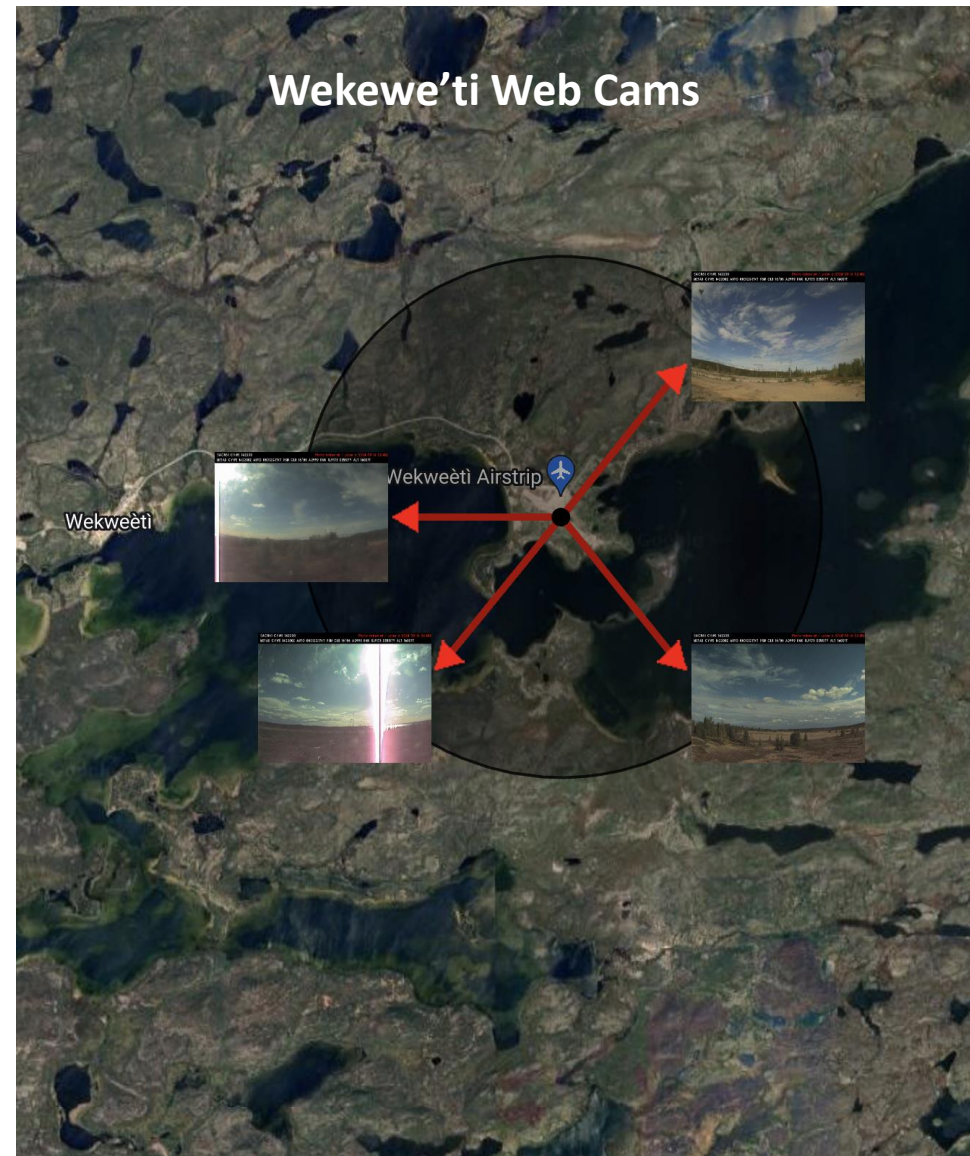




# 15 August 2024/DOY 228 Great Slave Lake Region



## Wekewe'ti Web Cams



SACN61 CYPY 131800 Photo taken at / prise a 2024-08-13 18:50Z  
METAR CYPY 131800Z AUTO 18004KT 150V230 9SM CLR 25/14 A2971 RMK SLP066 DENSITY ALT 2400FT



SACN61 CYPY 131800 Photo taken at / prise a 2024-08-13 18:50Z  
METAR CYPY 131800Z AUTO 18004KT 150V230 9SM CLR 25/14 A2971 RMK SLP066 DENSITY ALT 2400FT



SACN61 CYPY 131800 Photo taken at / prise a 2024-08-13 18:50Z  
METAR CYPY 131800Z AUTO 18004KT 150V230 9SM CLR 25/14 A2971 RMK SLP066 DENSITY ALT 2400FT



SACN61 CYPY 131800 Photo taken at / prise a 2024-08-13 18:50Z  
METAR CYPY 131800Z AUTO 18004KT 150V230 9SM CLR 25/14 A2971 RMK SLP066 DENSITY ALT 2400FT







# 15 August 2024/DOY 228 Great Slave Lake Region



## Rae Lakes Web Cams



SACN61 CYPY 131800 Photo taken at / prise a 2024-08-13 18:50Z  
METAR CYPY 131800Z AUTO 18004KT 150V230 9SM CLR 25/14 A2971 RMK SLP066 DENSITY ALT 2400FT



SACN61 CYPY 131800 Photo taken at / prise a 2024-08-13 18:50Z  
METAR CYPY 131800Z AUTO 18004KT 150V230 9SM CLR 25/14 A2971 RMK SLP066 DENSITY ALT 2400FT



SACN61 CYPY 131800 Photo taken at / prise a 2024-08-13 18:50Z  
METAR CYPY 131800Z AUTO 18004KT 150V230 9SM CLR 25/14 A2971 RMK SLP066 DENSITY ALT 2400FT



SACN61 CYPY 131800 Photo taken at / prise a 2024-08-13 18:50Z  
METAR CYPY 131800Z AUTO 18004KT 150V230 9SM CLR 25/14 A2971 RMK SLP066 DENSITY ALT 2400FT







# 15 August 2024/DOY 228 Great Slave Lake Region



## Wrigley Web Cams



SACN61 CYPY 131800 Photo taken at / prise a 2024-08-13 18:50Z  
METAR CYPY 131800Z AUTO 18004KT 150V230 9SM CLR 25/14 A2971 RMK SLP066 DENSITY ALT 2400FT



SACN61 CYPY 131800 Photo taken at / prise a 2024-08-13 18:50Z  
METAR CYPY 131800Z AUTO 18004KT 150V230 9SM CLR 25/14 A2971 RMK SLP066 DENSITY ALT 2400FT



SACN61 CYPY 131800 Photo taken at / prise a 2024-08-13 18:50Z  
METAR CYPY 131800Z AUTO 18004KT 150V230 9SM CLR 25/14 A2971 RMK SLP066 DENSITY ALT 2400FT



SACN61 CYPY 131800 Photo taken at / prise a 2024-08-13 18:50Z  
METAR CYPY 131800Z AUTO 18004KT 150V230 9SM CLR 25/14 A2971 RMK SLP066 DENSITY ALT 2400FT



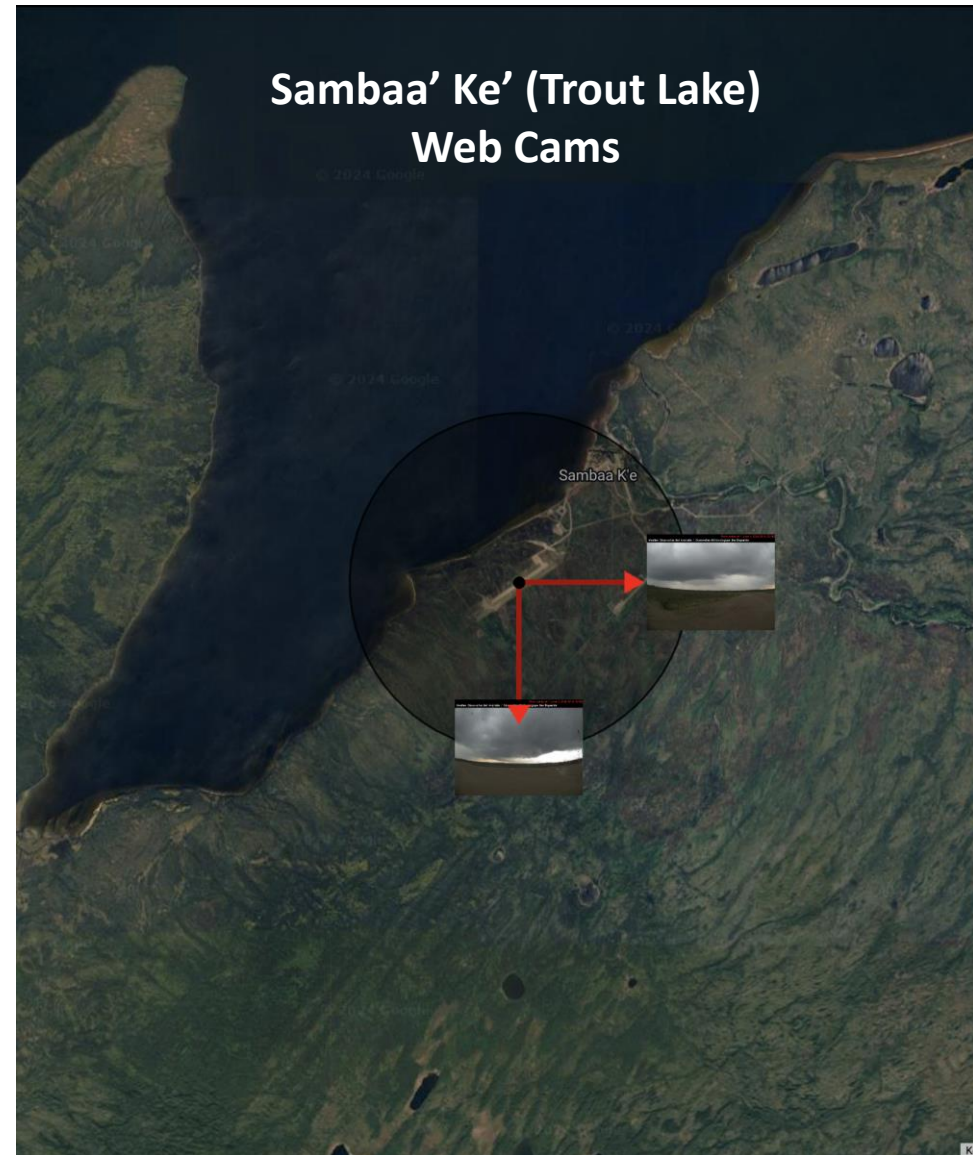




# 15 August 2024/DOY 228 Great Slave Lake Region



## Sambaa' Ke' (Trout Lake) Web Cams



SACN61 CYPY 131800 Photo taken at / prise a 2024-08-13 18:50Z  
METAR CYPY 131800Z AUTO 18004KT 150V230 9SM CLR 25/14 A2971 RMK SLP066 DENSITY ALT 2400FT



SACN61 CYPY 131800 Photo taken at / prise a 2024-08-13 18:50Z  
METAR CYPY 131800Z AUTO 18004KT 150V230 9SM CLR 25/14 A2971 RMK SLP066 DENSITY ALT 2400FT



SACN61 CYPY 131800 Photo taken at / prise a 2024-08-13 18:50Z  
METAR CYPY 131800Z AUTO 18004KT 150V230 9SM CLR 25/14 A2971 RMK SLP066 DENSITY ALT 2400FT



SACN61 CYPY 131800 Photo taken at / prise a 2024-08-13 18:50Z  
METAR CYPY 131800Z AUTO 18004KT 150V230 9SM CLR 25/14 A2971 RMK SLP066 DENSITY ALT 2400FT







# 15 August 2024/DOY 228 Great Slave Lake Region



## Lutseke' Web Cams



SACN61 CYPY 131800 Photo taken at / prise a 2024-08-13 18:50Z  
METAR CYPY 131800Z AUTO 18004KT 150V230 9SM CLR 25/14 A2971 RMK SLP066 DENSITY ALT 2400FT



SACN61 CYPY 131800 Photo taken at / prise a 2024-08-13 18:50Z  
METAR CYPY 131800Z AUTO 18004KT 150V230 9SM CLR 25/14 A2971 RMK SLP066 DENSITY ALT 2400FT



SACN61 CYPY 131800 Photo taken at / prise a 2024-08-13 18:50Z  
METAR CYPY 131800Z AUTO 18004KT 150V230 9SM CLR 25/14 A2971 RMK SLP066 DENSITY ALT 2400FT



SACN61 CYPY 131800 Photo taken at / prise a 2024-08-13 18:50Z  
METAR CYPY 131800Z AUTO 18004KT 150V230 9SM CLR 25/14 A2971 RMK SLP066 DENSITY ALT 2400FT

